

Dr. Vishal Gaurav, Dr. Archana Singal , Dr. Sonal Sharma*

Department of Dermatology and Pathology*

University College of Medical Sciences and Guru Teg Bahadur Hospital

Dilshad Garden, New Delhi

INTRODUCTION

- Kaposi sarcoma (KS), a multifocal endothelial proliferation, is strongly associated with Human Herpes Virus 8 (HHV8) and HIV.
- First malignancy to be linked with AIDS.
- AIDS defining skin disease.

CASE REPORT

History & examination: A 32-year-old male on Anti-retroviral therapy (ART) presented with 1 year history of

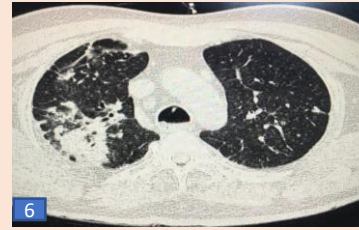
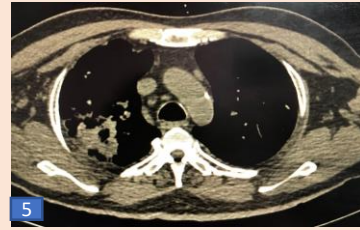
- Multiple firm discrete erythematous to violaceous plaques and nodules scattered over the trunk, oral mucosa, extremities and genitalia. (Images 1,2 & 3)
- Bleeding from lesions on manipulation.
- Non-pitting edema of the right lower limb (Image 4)
- Generalised lymphadenopathy
- Dyspnea for past 3 months.

CD 4 Count : 30/ μ l

Ultrasonography (right lower limb) : subcutaneous edema and thickening

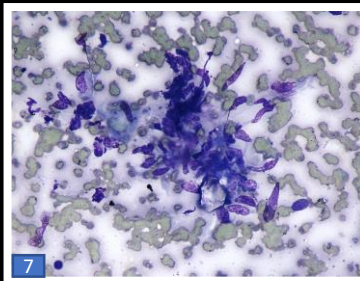
Computed Tomography : Thorax

- Patchy area of airspace opacity (Image 5)
- Air bronchogram in the posterior segment of right upper lobe (Image 6)
- Few fibrotic bands in the anterior segment of right upper lobe (Image 6)

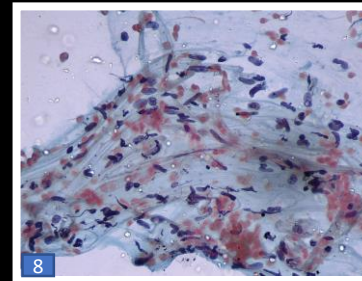


CYTOLOGY : FNAC from skin nodules

- Moderate cellularity with presence of cohesive clusters and singly scattered cells in a hemorrhagic background.
- Clusters comprised of oval to spindle cells with moderate indistinct cytoplasm, oval to spindle nuclei & finely granular chromatin.
- Suggestive of low grade spindle cell neoplasm.



Cluster of spindle cells in a hemorrhagic background. MGG (200X)



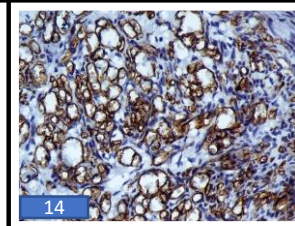
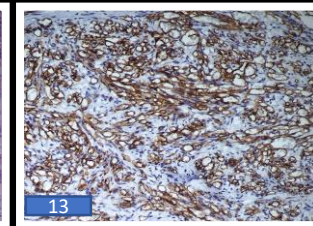
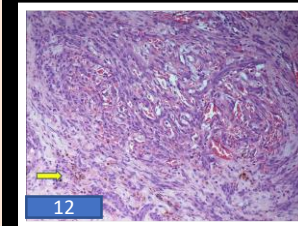
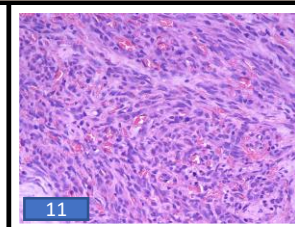
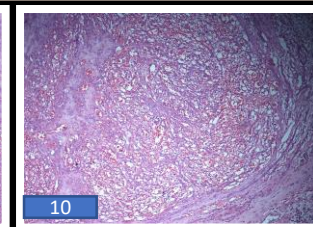
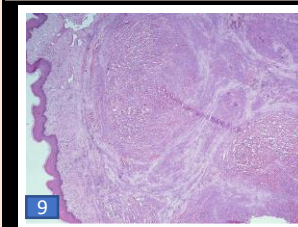
Oval to spindle nuclei with granular chromatin. Note low grade nuclear features. Papanicolaou stain (200X)

HISTOPATHOLOGY :

- Discrete cellular dermal nodule with intervening sieve like blood filled spaces. . (Images 9 & 10)
- Dermal proliferation comprised of spindle cell proliferation of endothelial cells. (Image 11)
- Presence extravasated erythrocytes and hemosiderin. (Image 12)

IMMUNOHISTOCHEMISTRY

Cells were immunopositive for CD34. (Images 13 & 14)



DISCUSSION AND CONCLUSION

- In disseminated Kaposi sarcoma, lymphedema and pulmonary involvement are poor prognostic signs and belongs to ACTG stage T1I1S1.
- Histology of Kaposi sarcoma is well described, however, FNAC is uncommon and cytological features have been rarely reported.

REFERENCES

Dalla Pria A, Pinato DJ, Bracchi M, Bower M. Recent advances in HIV-associated Kaposi sarcoma. *F1000Res*. 2019.



1

2

3

4

5

6

7

8

9

10

11

12

13

14